

# Introduction to `rstpm2`

Mark Clements

July 7, 2015

## 1 Mean survival

This has a useful interpretation for causal inference.

$$E_Z(S(t|Z, X = 1)) - E_Z(S(t|Z, X = 0))$$

```
fit <- rstpm()
predict(fit, type="meansurvdiff", newdata=data)
```

## 2 Cure models

For cure, we use the melanoma dataset used by Andersson and colleagues for cure models with Stata's `stpm2` (see <http://www.pauldickman.com/survival/>).

Initially, we merge the patient data with the all cause mortality rates.

```
> require(rstpm2)
> data(popmort)
> data(colon)
> popmort2 <- transform(popmort, exitage=age, exityear=year, age=NULL, year=NULL)
> colon2 <- within(colon, {
+   status <- ifelse(surv_mm>120.5, 1, status)
+   tm <- pmin(surv_mm, 120.5)/12
+   exit <- dx+tm*365.25
+   sex <- as.numeric(sex)
+   exitage <- pmin(floor(age+tm), 99)
+   exityear <- floor(yydx+tm)
+   ##year8594 <- (year8594=="Diagnosed 85-94")
+ })
> colon2 <- merge(colon2, popmort2)
```

For comparisons, we fit the relative survival model without and with cure.

```
> fit0 <- stpm2(Surv(tm, status %in% 2:3)~I(year8594=="Diagnosed 85-94"),
+               data=colon2,
+               bhazard=colon2$rate, df=5)
> summary(fit <- stpm2(Surv(tm, status %in% 2:3)~I(year8594=="Diagnosed 85-94"),
+                      data=colon2,
+                      bhazard=colon2$rate,
+                      df=5, cure=TRUE))
```

Maximum likelihood estimation

Call:

```
mle2(minuslogl = negll, start = coef, eval.only = TRUE, vecpar = TRUE,
     gr = function (beta, kappa = 1)
     {
       eta <- as.vector(pars$X %*% beta)
       etaD <- as.vector(pars$XD %*% beta)
       h <- link$h(eta, etaD)
       gradh <- link$gradh(eta, etaD, pars)
       gradH <- link$gradH(eta, etaD, pars)
       gconstraint <- colSums((kappa * h * pars$wt * gradh)[h <
         0, ])
       h[h < 0] <- 1e-16
       g <- colSums(pars$wt * (-gradH + ifelse(pars$event, 1/h,
         0) * gradh)) - gconstraint
       if (delayed) {
         eta <- as.vector(pars0$X %*% beta)
         etaD <- as.vector(pars0$XD %*% beta)
         gradH <- link$gradH(eta, etaD, pars0)
         g <- g + colSums(gradH * pars0$wt)
       }
       return(-g)
     }, control = list(parscale = c(0.1, 0.1, 0.1, 0.1, 0.1, 0.1,
     0.1), maxit = 300), lower = -Inf, upper = Inf)
```

Coefficients:

	Estimate	Std. Error	z value	Pr(z)
(Intercept)	-3.977326	0.054778	-72.6078	< 2.2e-16
I(year8594 == "Diagnosed 85-94")TRUE	-0.155613	0.025088	-6.2027	5.551e-10
nsx(log(tm), df = 5, cure = TRUE)1	3.323188	0.053166	62.5062	< 2.2e-16
nsx(log(tm), df = 5, cure = TRUE)2	3.628637	0.053160	68.2592	< 2.2e-16
nsx(log(tm), df = 5, cure = TRUE)3	1.634854	0.022465	72.7742	< 2.2e-16
nsx(log(tm), df = 5, cure = TRUE)4	6.592018	0.111504	59.1190	< 2.2e-16
nsx(log(tm), df = 5, cure = TRUE)5	3.371806	0.042788	78.8025	< 2.2e-16

```
(Intercept) ***
I(year8594 == "Diagnosed 85-94")TRUE ***
nsx(log(tm), df = 5, cure = TRUE)1 ***
nsx(log(tm), df = 5, cure = TRUE)2 ***
nsx(log(tm), df = 5, cure = TRUE)3 ***
nsx(log(tm), df = 5, cure = TRUE)4 ***
nsx(log(tm), df = 5, cure = TRUE)5 ***
---
```

Signif. codes: 0 '\*\*\*' 0.001 '\*\*' 0.01 '\*' 0.05 '.' 0.1 ' ' 1

-2 log L: 42190.77

```
> predict(fit, head(colon2), se.fit=TRUE)
```

Estimate	lower	upper
----------	-------	-------

```

1 0.8610835 0.8542905 0.8675849
2 0.7934666 0.7850118 0.8016323
3 0.6967422 0.6863213 0.7068947
4 0.8610835 0.8542905 0.8675849
5 0.8221253 0.8143237 0.8296344
6 0.8610835 0.8542905 0.8675849

```

The estimate for the year parameter from the model without cure is within three significant figures with that in Stata. For the predictions, the Stata model gives:

```

+-----+
|      surv      surv_lci      surv_uci |
+-----+
1. | .86108264      .8542898      .8675839 |
2. | .79346526      .7850106      .8016309 |
3. | .69674037      .6863196      .7068927 |
4. | .86108264      .8542898      .8675839 |
5. | .82212425      .8143227      .8296332 |
+-----+
6. | .86108264      .8542898      .8675839 |
+-----+

```

We can estimate the proportion of failures at the end of follow-up using:

```

> newdata.eof <- data.frame(year8594 = unique(colon2$year8594),
+                             tm=max(colon2$tm))
> 1-predict(fit0, newdata.eof, type="surv", se.fit=TRUE)

```

```

      Estimate      lower      upper
1 0.6063672 0.6211721 0.5916026
2 0.5515138 0.5661327 0.5370117

```

```

> 1-predict(fit, newdata.eof, type="surv", se.fit=TRUE)

```

```

      Estimate      lower      upper
1 0.5913307 0.6055015 0.5772173
2 0.5350813 0.5485372 0.5217434

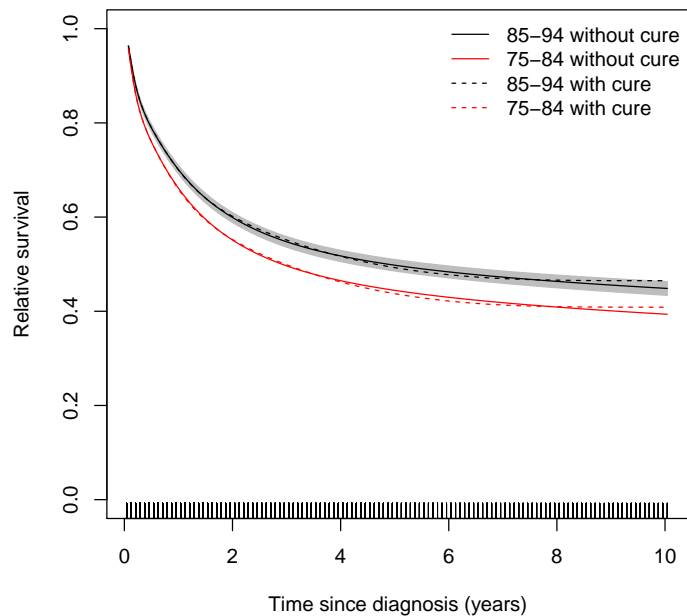
```

We can plot the predicted survival estimates:

```

> plot(fit0,newdata=data.frame(year8594 = "Diagnosed 85-94"), ylim=0:1,
+       xlab="Time since diagnosis (years)", ylab="Relative survival")
> plot(fit0,newdata=data.frame(year8594 = "Diagnosed 75-84"),
+       add=TRUE,line.col="red",rug=FALSE)
> plot(fit,newdata=data.frame(year8594 = "Diagnosed 85-94"),
+       add=TRUE,ci=FALSE,lty=2,rug=FALSE)
> plot(fit,newdata=data.frame(year8594="Diagnosed 75-84"),
+       add=TRUE,rug=FALSE,line.col="red",ci=FALSE,lty=2)
> legend("topright",c("85-94 without cure","75-84 without cure",
+                     "85-94 with cure","75-84 with cure"),
+       col=c(1,2,1,2), lty=c(1,1,2,2), bty="n")

```



And the hazard curves:

```
> plot(fit0,newdata=data.frame(year8594 = "Diagnosed 85-94"),
+       ylim=c(0,0.5), type="hazard",
+       xlab="Time since diagnosis (years)",ylab="Excess hazard")
> plot(fit0,newdata=data.frame(year8594 = "Diagnosed 75-84"),
+       type="hazard",
+       add=TRUE,line.col="red",rug=FALSE)
> plot(fit,newdata=data.frame(year8594 = "Diagnosed 85-94"),
+       type="hazard",
+       add=TRUE,ci=FALSE,lty=2,rug=FALSE)
> plot(fit,newdata=data.frame(year8594="Diagnosed 75-84"),
+       type="hazard",
+       add=TRUE,rug=FALSE,line.col="red",ci=FALSE,lty=2)
> legend("topright",c("85-94 without cure","75-84 without cure",
+                     "85-94 with cure","75-84 with cure"),
+       col=c(1,2,1,2), lty=c(1,1,2,2), bty="n")
```

