

Working with communities (0.1-614)

Lawrence Hudson

2012-07-23

Contents

1	Introduction	1
2	Datasets	1
3	Community representation	2
3.1	Community properties	3
3.2	Nodes	5
3.3	Food web	10
3.3.1	Resource-consumer pairs	10
3.3.2	Trophic-link properties	11
3.3.3	Predation matrix	13
3.3.4	Node connectivity	13
3.3.5	Trophic chains	16
3.3.6	Trophic level	17
4	Community manipulations	19
4.1	Node order	19
4.2	Node order and intervality	20
4.3	Removing nodes	22
4.4	Removing cannibalistic links	24
4.5	Lumping nodes	24

1 Introduction

The core of the package is a flexible, extendable representation of an ecological community, described in this vignette. Cheddar’s system for plotting communities and statistical analysis of communities is covered in the ‘PlotsAndStats’ vignette. The ‘ImportExport’ vignette covers getting community data in to and out of Cheddar. If you are working with collections, for example to see how community structure changes through time, across environmental gradients or resulting from experimental manipulation, read the ‘Collections’ vignette.

2 Datasets

Cheddar contains several published empirical food-web datasets (Table 1).

Community	Notes	References
Benguela	Crude estimate of M ; trophic links have diet fraction	Yodzis (1998)
BroadstoneStream	M and N ; nodes are well resolved	Woodward et al. (2005)
TL84 and TL86	M and N ; nodes are well resolved	Carpenter and Kitchell (1996) Cohen et al. (2003) Jonsson et al. (2005)
SkipwithPond	No M or N ; trophic links have ‘link.evidence’ and ‘link.life.stage’ properties	Warren (1989)
YthanEstuary	M and N for all nodes except detritus; nodes are well-resolved at high trophic levels but poorly resolved at low trophic levels	Hall and Raffaelli (1991) Emmerson and Raffaelli (2004)

Table 1: Community data in Cheddar. M : body mass. N : numerical abundance.

3 Community representation

A Cheddar community has three aspects:

- *community properties* such as sampling date, lat & long, altitude, temperature and pH,
- *nodes*, which are the names of species together with any associated properties such as mean body mass, M , and mean numerical abundance, N , and taxonomic classification,
- the *food web*, defined as the names of each resource-consumer node pair, together with properties such as evidence for the link (e.g. empirically observed or inferred from literature).

The final aspect is optional - Cheddar communities need not contain trophic links. The `LoadCommunity` and `SaveCommunity` functions provide a standard data format, with each aspect stored in its own CSV (Comma-Separated Value) file, described further in the ‘ImportExport’ vignette. Cheddar allows user-defined data to be added to any of these three aspects simply by adding the data to the relevant CSV file. Any data so added will be available to Cheddar’s plotting and analysis functions. Each aspect is accessed using the functions `CPS` (for **C**ommunity **P**roperties), `NPS` (for **N**ode **P**roperty) and `TLPS` (for **T**rophic **L**ink **P**roperty) (Table 2). Each of the three community aspects are discussed below. The

Aspect	Accessor function	PlotFunction	CSV file
Properties	<code>CPS</code>	n/a	<code>properties.csv</code>
Nodes	<code>NPS</code>	<code>PlotNPS</code>	<code>nodes.csv</code>
Food web	<code>TLPS</code>	<code>PlotTLPS</code>	<code>trophic.links.csv</code>

Table 2: Aspects of a Cheddar community

following examples use the `TL84` dataset, which is from Tuesday Lake in Michigan, USA, sampled in 1984 (Carpenter and Kitchell, 1996; Cohen et al., 2003; Jonsson et al., 2005). The data contain estimates of body mass, M , and numerical abundance, N , for each species.

```
> data(TL84) # Load the dataset
> print(TL84) # A description of the data
```

Tuesday Lake sampled in 1984 containing 56 nodes.

3.1 Community properties

The `CommunityPropertyNames` function returns the names of the community properties.

```
> CommunityPropertyNames(TL84)
```

```
[1] "title"    "M.units" "N.units" "lat"      "long"     "habitat"
```

‘title’ is the only property that a community is guaranteed to contain. The function `CPS` (for **C**ommunity **P**roperty **S**) returns a list of values.

```
> CPS(TL84)
```

```
$title
```

```
[1] "Tuesday Lake sampled in 1984"
```

```
$M.units
```

```
[1] "kg"
```

```
$N.units
```

```
[1] "m^-3"
```

```
$lat
```

```
[1] 46.21667
```

```
$long
```

```
[1] 89.53333
```

```
$habitat
```

```
[1] "Freshwater pelagic"
```

This shows the latitude and longitude of the lake and tells us the units for body mass, M , and numerical abundance, N , are kg and individuals per metre cubed, respectively. Many of the provided communities (Table 1) contain lat, long and habitat. Some communities have more properties. `CPS` lets you get a subset of community properties. For example, to see only the lat and long.

```
> CPS(TL84, c('lat', 'long'))
```

```
$lat
```

```
[1] 46.21667
```

```
$long
```

```
[1] 89.53333
```

`CPS` also accepts the names of functions that compute community properties. Two such functions are `NumberOfNodes` and `NumberOfTrophicLinks`.

```

> NumberOfNodes(TL84)

[1] 56

> NumberOfTrophicLinks(TL84)

[1] 269

> # A list containing lat, long, number of nodes and number of trophic links
> CPS(TL84, c('lat', 'long', 'NumberOfNodes', 'NumberOfTrophicLinks'))

$lat
[1] 46.21667

$long
[1] 89.53333

$NumberOfNodes
[1] 56

$NumberOfTrophicLinks
[1] 269

```

A named vector can be used to rename values.

```

> CPS(TL84, c('lat', 'long', S='NumberOfNodes', L='NumberOfTrophicLinks'))

$lat
[1] 46.21667

$long
[1] 89.53333

$S
[1] 56

$L
[1] 269

```

Names that are neither properties of the community nor function names result in NA.

```

> # Returns a list containing 'not a property'=NA
> CPS(TL84, c('not a property'))

$`not a property`
[1] NA

```

The related function `CollectionCPS` will be of interest if you are examining collections of communities, described in the ‘Collections’ vignette.

3.2 Nodes

Let's use two more Cheddar functions to get some more information about TL84's nodes.

```
> NumberOfNodes(TL84)
```

```
[1] 56
```

```
> NodePropertyNames(TL84)
```

```
[1] "node"      "category"  "M"         "N"         "kingdom"   "phylum"
[7] "class"     "order"     "family"    "resolved.to"
```

The data contains 56 nodes and `NodePropertyNames` tells us that TL84 contains a lot of information about each node. We can get a table of these node properties by using the `NPS` function. To avoid printing the full table of 56 rows, the examples below use R's `head` and `tail` functions to show just the first or last six rows of the `data.frame` returned by `NPS`.

```
> head(NPS(TL84))
```

	node	category	M	N	kingdom
Nostoc sp.	Nostoc sp.	producer	7.97e-13	2.0e+06	Bacteria
Arthrodesmus sp.	Arthrodesmus sp.	producer	1.52e-12	4.9e+07	Plantae
Asterionella formosa	Asterionella formosa	producer	1.12e-12	5.0e+06	Chromista
Cryptomonas sp. 1	Cryptomonas sp. 1	producer	2.03e-13	6.4e+07	Chromista
Cryptomonas sp. 2	Cryptomonas sp. 2	producer	1.51e-12	2.8e+07	Chromista
Chroococcus dispersus	Chroococcus dispersus	producer	2.39e-13	2.0e+07	Bacteria

	phylum	class	order	family
Nostoc sp.	Cyanobacteria	Hormogoneae	Nostocales	Nostocaceae
Arthrodesmus sp.	Chlorophyta	Zygnematophyceae	Zygnematales	Desmidiaceae
Asterionella formosa	Ochrophyta	Coscinodiscophyceae	Fragilariales	Fragilariaceae
Cryptomonas sp. 1	Cryptophyta	Cryptophyceae	Cryptomonadales	Cryptomonadaceae
Cryptomonas sp. 2	Cryptophyta	Cryptophyceae	Cryptomonadales	Cryptomonadaceae
Chroococcus dispersus	Cyanobacteria	Chroobacteria	Chroococcales	Chroococcaceae

	resolved.to
Nostoc sp.	Species
Arthrodesmus sp.	Species
Asterionella formosa	Species
Cryptomonas sp. 1	Species
Cryptomonas sp. 2	Species
Chroococcus dispersus	Species

'node' is the only node property that a community is guaranteed to contain. Many of Cheddar's plotting and analysis functions make use of the 'category' node property; this property is optional but, if included in a community, it should contain one of 'producer', 'invertebrate', 'vert.ecto', 'vert.endo' or should be empty.

```
> # Just body mass
```

```
> head(NPS(TL84, 'M'))
```

```

M
Nostoc sp. 7.97e-13
Arthrodesmus sp. 1.52e-12
Asterionella formosa 1.12e-12
Cryptomonas sp. 1 2.03e-13
Cryptomonas sp. 2 1.51e-12
Chroococcus dispersus 2.39e-13

```

```

> # Body mass and numerical abundance.
> head(NPS(TL84, c('M', 'N'))))

```

```

M N
Nostoc sp. 7.97e-13 2.0e+06
Arthrodesmus sp. 1.52e-12 4.9e+07
Asterionella formosa 1.12e-12 5.0e+06
Cryptomonas sp. 1 2.03e-13 6.4e+07
Cryptomonas sp. 2 1.51e-12 2.8e+07
Chroococcus dispersus 2.39e-13 2.0e+07

```

In addition to first-class node properties like M and N , you can also use `NPS` to assemble computed node properties by passing in the name(s) of function(s) that take a community object as the only parameter and return either a vector of length `NumberOfNodes` or a `matrix` or `data.frame` with `NumberOfNodes` rows. `Cheddar` contains many suitable functions and you can also write your own. For example, it is common to \log_{10} -transformation M and N , which we can do using the `Log10M` and `Log10N` functions.

```

> tail(NPS(TL84, c('Log10M', 'Log10N'))))

```

```

Log10M Log10N
Trichocerca cylindrica -9.420216 4.9116902
Tropocyclops prasinus -8.164309 4.6919651
Chaoborus punctipennis -6.522879 4.0791812
Phoxinus eos -2.995679 0.2944662
Phoxinus neogaeus -2.931814 -0.8761484
Umbra limi -2.889410 -0.8794261

```

You can provide a mix of property and function names.

```

> tail(NPS(TL84, c('Log10M', 'Log10N', 'category', 'phylum'))))

```

```

Log10M Log10N category phylum
Trichocerca cylindrica -9.420216 4.9116902 invertebrate Rotifera
Tropocyclops prasinus -8.164309 4.6919651 invertebrate Arthropoda
Chaoborus punctipennis -6.522879 4.0791812 invertebrate Arthropoda
Phoxinus eos -2.995679 0.2944662 vert.ecto Chordata
Phoxinus neogaeus -2.931814 -0.8761484 vert.ecto Chordata
Umbra limi -2.889410 -0.8794261 vert.ecto Chordata

```

The `Log10MNBiomass` function returns a `matrix` of \log_{10} -transformed body mass, M , numerical abundance, N , and biomass, B , and is a convenient way to get all three of these properties in to a table.

```

> tail(NPS(TL84, c('Log10MNBiomass'))))

```

	Log10M	Log10N	Log10Biomass
Trichocerca cylindrica	-9.420216	4.9116902	-4.508526
Tropocyclops prasinus	-8.164309	4.6919651	-3.472344
Chaoborus punctipennis	-6.522879	4.0791812	-2.443697
Phoxinus eos	-2.995679	0.2944662	-2.701212
Phoxinus neogaeus	-2.931814	-0.8761484	-3.807962
Umbra limi	-2.889410	-0.8794261	-3.768836

We can use NPS to assemble a table showing node degree: the number of trophic links in to and out of that node. Cheddar contains three functions that compute a different aspect of node degree.

```
> nps <- NPS(TL84, c('InDegree', 'OutDegree', 'Degree'))
> head(nps)
```

	InDegree	OutDegree	Degree
Nostoc sp.	0	4	4
Arthrodesmus sp.	0	3	3
Asterionella formosa	0	0	0
Cryptomonas sp. 1	0	18	18
Cryptomonas sp. 2	0	5	5
Chroococcus dispersus	0	18	18

```
> # This is always true for all nodes
> all(nps$Degree == nps$InDegree+nps$OutDegree)
```

```
[1] TRUE
```

Some readers will be more familiar with the terms ‘trophic vulnerability’ and ‘trophic generality’; the functions `TrophicVulnerability` and `TrophicGenerality` are synonyms for `OutDegree` and `InDegree` respectively. Cannibalistic links count twice towards `Degree` - one link going out and one going in. The cannibalistic fish *Umbra limi* in TL84 has no consumers other than itself so it has an `OutDegree` of one.

```
> IsCannibal(TL84)['Umbra limi']
```

```
Umbra limi
      TRUE
```

```
> InDegree(TL84)["Umbra limi"]
```

```
Umbra limi
      12
```

```
> OutDegree(TL84)["Umbra limi"]
```

```
Umbra limi
      1
```

```
> Degree(TL84)["Umbra limi"]
```

```
Umbra limi
      13
```

We can combine some of these functions to investigate allometric degree distribution (Jonsson et al., 2005; Otto et al., 2007; Digel et al., 2011; Jacob et al., 2011), which describe how species' numbers of trophic links scale with their log-transformed body masses.

```
> tail(NPS(TL84, c('Log10M', 'OutDegree', 'InDegree', 'Degree')))
```

	Log10M	OutDegree	InDegree	Degree
Trichocerca cylindrica	-9.420216	4	6	10
Tropocyclops prasinus	-8.164309	7	16	23
Chaoborus punctipennis	-6.522879	4	22	26
Phoxinus eos	-2.995679	1	9	10
Phoxinus neogaeus	-2.931814	1	9	10
Umbra limi	-2.889410	1	12	13

Some authors have been interested in how trophic level varies with body mass (Jacob et al., 2011). Two more functions suitable for use with NPS are `PreyAveragedTrophicLevel` and `ChainAveragedTrophicLevel`, which give different measures of each node's trophic level in the food web; these two functions, and others related to trophic level, are discussed further in section 3.3.

```
> tail(NPS(TL84, c('Log10M', 'PreyAveragedTrophicLevel',
                    'ChainAveragedTrophicLevel')))
```

	Log10M	PreyAveragedTrophicLevel	ChainAveragedTrophicLevel
Trichocerca cylindrica	-9.420216	2.000000	2.000000
Tropocyclops prasinus	-8.164309	3.142857	3.333333
Chaoborus punctipennis	-6.522879	3.171344	4.602527
Phoxinus eos	-2.995679	3.529951	5.168337
Phoxinus neogaeus	-2.931814	3.529951	5.168337
Umbra limi	-2.889410	3.802678	5.835003

The column titles for the trophic-level measures are very long. We can use a named vector to get shortened column titles.

```
> tail(NPS(TL84, c('Log10M', PATL='PreyAveragedTrophicLevel',
                    CATL='ChainAveragedTrophicLevel')))
```

	Log10M	PATL	CATL
Trichocerca cylindrica	-9.420216	2.000000	2.000000
Tropocyclops prasinus	-8.164309	3.142857	3.333333
Chaoborus punctipennis	-6.522879	3.171344	4.602527
Phoxinus eos	-2.995679	3.529951	5.168337
Phoxinus neogaeus	-2.931814	3.529951	5.168337
Umbra limi	-2.889410	3.802678	5.835003

NPS also allows parameters to be passed to functions. This is demonstrated using the `TrophicSpecies` function: in order to account for different levels of taxonomic resolution and other biases, researchers often lump biological species together. Species in the food web that have the same resources and consumers are the same 'trophic species' (Briand and Cohen, 1984; Pimm et al., 1991; Williams and Martinez, 2000). The `TrophicSpecies` function computes these IDs.

```
> tail(TrophicSpecies(TL84))
```


Trichocerca cylindrica	Tropocyclops prasinus	Chaoborus punctipennis
16	13	20
Phoxinus eos	Phoxinus neogaeus	Umbra limi
21	21	22

Some analyses (e.g. Jonsson et al., 2005) exclude isolated species when computing trophic species numbers. Isolated species are those nodes that consume no others and have no consumers (Section 3.3.4). To compare the effect of including or excluding isolated species we can pass the function to NPS twice, once setting the ‘include.isolated’ parameter.

```
> head(NPS(TL84, list(TS.iso='TrophicSpecies',
                      TS.no.iso=list('TrophicSpecies', include.isolated=FALSE))))
```

	TS.iso	TS.no.iso
Nostoc sp.	1	1
Arthrodasmus sp.	2	2
Asterionella formosa	3	NA
Cryptomonas sp. 1	4	3
Cryptomonas sp. 2	5	4
Chroococcus dispersus	4	3

Asterionella formosa is an isolated species so has been given a trophic species of NA in the ‘TS.no.iso’ column. The `LumpTrophicSpecies` function lumps nodes together using these IDs (Section 4.5). The second argument to NPS can therefore be defined as a list containing either names of first class properties, names of functions that take only a community or lists in which the first element is the name of a function that takes a community and subsequent elements are *named* arguments to that function. Names of the list are column names in the returned `data.frame`.

NPS therefore makes it very easy to assemble tables of properties either for analysis or for presentation in a manuscript. The example below recreates the first ten rows of Jonsson et al. (2005), Appendix 1A (p74–75).

```
> head(NPS(TL84, list('category', BM='M', 'NA'='N',
                      TS=list('TrophicSpecies', include.isolated=FALSE),
                      TH=list('TrophicHeight', include.isolated=FALSE))),
10)
```

	category	BM	NA	TS	TH
Nostoc sp.	producer	7.97e-13	2.0e+06	1	1
Arthrodasmus sp.	producer	1.52e-12	4.9e+07	2	1
Asterionella formosa	producer	1.12e-12	5.0e+06	NA	NA
Cryptomonas sp. 1	producer	2.03e-13	6.4e+07	3	1
Cryptomonas sp. 2	producer	1.51e-12	2.8e+07	4	1
Chroococcus dispersus	producer	2.39e-13	2.0e+07	3	1
Closteriopsis longissimus	producer	2.37e-13	1.0e+08	5	1
Chrysosphaerella longispina	producer	8.31e-10	4.0e+06	NA	NA
Dinobryon bavaricum	producer	2.44e-12	3.0e+07	6	1
Dinobryon cylindricum	producer	1.57e-12	3.0e+06	1	1

Some values in this table are different to those presented by Jonsson et al. (2005) in their Appendix 1A. Firstly, the numerical abundance values for zooplankton are different. Values in their table “...should

be multiplied by 6 to convert them to concentrations in the epilimnion” (Jonsson et al., 2005), and our data incorporate that conversion. Secondly, the values of trophic height presented are slightly different for species at higher trophic levels because of the different methods used to break cycles (see the help for Cheddar’s `TrophicSpecies` function). It is not clear from the text of Jonsson et al. (2005) exactly how they broke cycles. Because Cheddar is open source, users can refer readers to the function and version used to completely specify the algorithm used.

NPS returns NA for any names that are neither a first-class properties nor the name of a function.

```
> head(NPS(TL84, c('Not a property or function')))
```

```

                Not a property or function
Nostoc sp.                NA
Arthrodesmus sp.          NA
Asterionella formosa      NA
Cryptomonas sp. 1         NA
Cryptomonas sp. 2         NA
Chroococcus dispersus     NA
```

3.3 Food web

`NumberOfTrophicLinks` returns the number of trophic links that the community contains.

```
> NumberOfTrophicLinks(TL84)
```

```
[1] 269
```

Cheddar communities need not contain trophic links so this function might return zero. The following sections describe some different ways in which to view and analyse food webs in cheddar.

3.3.1 Resource-consumer pairs

`TLPS` (for **T**rophic **L**ink **P**roperty**S**) returns a `data.frame` of trophic links pairs (or NULL if the community has no food web). The `data.frame` always contains the columns ‘resource’ and ‘consumer’.

```
> head(TLPS(TL84))
```

```

      resource      consumer
1  Cryptomonas sp. 1 Ascomorpha eucadis
2  Chroococcus dispersus Ascomorpha eucadis
3 Unclassified flagellates Ascomorpha eucadis
4      Chromulina sp. Ascomorpha eucadis
5  Selenastrum minutum Ascomorpha eucadis
6  Trachelomonas sp. Ascomorpha eucadis
```

`TLPS` takes a parameter `node.properties`, which should be a vector of names suitable for passing to `NPS`. You can therefore use functions and names and can pass parameters to functions, just as in the `NPS` examples above.

```
> head(TLPS(TL84, node.properties='M'))
```

	resource	consumer	resource.M	consumer.M
1	Cryptomonas sp. 1	Ascomorpha eucadis	2.03e-13	1.4e-10
2	Chroococcus dispersus	Ascomorpha eucadis	2.39e-13	1.4e-10
3	Unclassified flagellates	Ascomorpha eucadis	3.46e-13	1.4e-10
4	Chromulina sp.	Ascomorpha eucadis	3.03e-14	1.4e-10
5	Selenastrum minutum	Ascomorpha eucadis	2.72e-13	1.4e-10
6	Trachelomonas sp.	Ascomorpha eucadis	1.75e-13	1.4e-10

```
> head(TLPS(TL84, node.properties=c('M', 'Biomass')))
```

	resource	consumer	resource.M	resource.Biomass	consumer.M
1	Cryptomonas sp. 1	Ascomorpha eucadis	2.03e-13	1.2992e-05	1.4e-10
2	Chroococcus dispersus	Ascomorpha eucadis	2.39e-13	4.7800e-06	1.4e-10
3	Unclassified flagellates	Ascomorpha eucadis	3.46e-13	6.5048e-04	1.4e-10
4	Chromulina sp.	Ascomorpha eucadis	3.03e-14	4.5147e-06	1.4e-10
5	Selenastrum minutum	Ascomorpha eucadis	2.72e-13	5.4400e-05	1.4e-10
6	Trachelomonas sp.	Ascomorpha eucadis	1.75e-13	3.8850e-05	1.4e-10

	consumer.Biomass
1	1.932e-06
2	1.932e-06
3	1.932e-06
4	1.932e-06
5	1.932e-06
6	1.932e-06

```
> head(TLPS(TL84, node.properties=c('M', B='Biomass')))
```

	resource	consumer	resource.M	resource.B	consumer.M	consumer.B
1	Cryptomonas sp. 1	Ascomorpha eucadis	2.03e-13	1.2992e-05	1.4e-10	1.932e-06
2	Chroococcus dispersus	Ascomorpha eucadis	2.39e-13	4.7800e-06	1.4e-10	1.932e-06
3	Unclassified flagellates	Ascomorpha eucadis	3.46e-13	6.5048e-04	1.4e-10	1.932e-06
4	Chromulina sp.	Ascomorpha eucadis	3.03e-14	4.5147e-06	1.4e-10	1.932e-06
5	Selenastrum minutum	Ascomorpha eucadis	2.72e-13	5.4400e-05	1.4e-10	1.932e-06
6	Trachelomonas sp.	Ascomorpha eucadis	1.75e-13	3.8850e-05	1.4e-10	1.932e-06

TLPS takes a parameter `link.properties`, which should be a vector of names that are either first-class trophic-link properties or are functions. Functions should take a community as the first parameter and a second parameter that is a `data.frame` containing the columns ‘resource’ and ‘consumer’. They should return either a vector of length `NumberOfTrophicLinks` or a matrix or `data.frame` with `NumberOfTrophicLinks` rows.

3.3.2 Trophic-link properties

Food web data in Cheddar communities can be augmented with extra information. The dataset of SkipwithPond (Warren, 1989) contains two such properties: ‘link.evidence’ and ‘link.life.stage’.

```
> data(SkipwithPond)
> head(TLPS(SkipwithPond))
```

	resource	consumer	link.evidence
1	Small oligochaetes (principally Enchytraeidae)	Polycelis tenuis	Inferred
2	Lumbriculus variegatus	Polycelis tenuis	Inferred
3	Procladius sagittalis	Polycelis tenuis	Inferred
4	Corynoneura scutellata	Polycelis tenuis	Inferred
5	Chironomus dorsalis	Polycelis tenuis	Known
6	Glyptotendipes pallens	Polycelis tenuis	Known


```
link.life.stage
1 All life stages
2 All life stages
3 All life stages
4 All life stages
5 All life stages
6 All life stages
```

TrophicLinkPropertyNames returns the names of the trophic-link properties in a community.

```
> TrophicLinkPropertyNames(SkipwithPond)
```

```
[1] "resource"      "consumer"      "link.evidence" "link.life.stage"
```

TLPS accepts a 'link.properties' parameter. You can use this to get a subset of the first-class link properties. The columns 'resource' and 'consumer' are always returned.

```
> head(TLPS(SkipwithPond, link.properties='link.evidence'))
```

	resource	consumer	link.evidence
1	Small oligochaetes (principally Enchytraeidae)	Polycelis tenuis	Inferred
2	Lumbriculus variegatus	Polycelis tenuis	Inferred
3	Procladius sagittalis	Polycelis tenuis	Inferred
4	Corynoneura scutellata	Polycelis tenuis	Inferred
5	Chironomus dorsalis	Polycelis tenuis	Known
6	Glyptotendipes pallens	Polycelis tenuis	Known

TLPS takes a parameter `link.properties`, which should be a vector of names that are either first-class trophic-link properties or are functions. Functions should take a community as the only parameter. They should return either a vector of length `NumberOfTrophicLinks` or a matrix or data.frame with `NumberOfTrophicLinks` rows. This is illustrated by the code fragment below, which uses the `Log10RCMRatio` function to get the \log_{10} -transformed ratio between body mass of the resource and consumer in each trophic link in TL84.

```
> head(TLPS(TL84, link.properties='Log10RCMRatio'))
```

	resource	consumer	Log10RCMRatio
1	Cryptomonas sp.	Ascomorpha eucadis	-2.838632
2	Chroococcus dispersus	Ascomorpha eucadis	-2.767730
3	Unclassified flagellates	Ascomorpha eucadis	-2.607052
4	Chromulina sp.	Ascomorpha eucadis	-3.664685
5	Selenastrum minutum	Ascomorpha eucadis	-2.711559
6	Trachelomonas sp.	Ascomorpha eucadis	-2.903090

You can combine `node.properties` and `link.properties`.

```
> head(TLPS(TL84, node.properties='Log10M', link.properties='Log10RCMRatio'))
```

	resource	consumer	Log10RCMRatio	resource.Log10M
1	Cryptomonas sp. 1	Ascomorpha eucadis	-2.838632	-12.69250
2	Chroococcus dispersus	Ascomorpha eucadis	-2.767730	-12.62160
3	Unclassified flagellates	Ascomorpha eucadis	-2.607052	-12.46092
4	Chromulina sp.	Ascomorpha eucadis	-3.664685	-13.51856
5	Selenastrum minutum	Ascomorpha eucadis	-2.711559	-12.56543
6	Trachelomonas sp.	Ascomorpha eucadis	-2.903090	-12.75696
	consumer.Log10M			
1	-9.853872			
2	-9.853872			
3	-9.853872			
4	-9.853872			
5	-9.853872			
6	-9.853872			

3.3.3 Predation matrix

The `PredationMatrix` function returns an `R matrix` object. The matrix returned by the code fragment below is 56 x 56 and so is not shown for brevity.

```
> pm <- PredationMatrix(TL84)
```

In the example above, all entries in 'pm' are either 0 or 1. This summation below computes the number of 1s in the matrix, which is the same as the number of trophic links in the community.

```
> sum(pm)
```

```
[1] 269
```

```
> NumberOfTrophicLinks(TL84)
```

```
[1] 269
```

Data that contain estimates of diet fraction can be used to construct a weighted predation matrix. The Benguela dataset contains the 'diet.fraction' node property (Yodzis, 1998).

```
> data(Benguela)
```

```
> pm <- PredationMatrix(Benguela, weight='diet.fraction')
```

3.3.4 Node connectivity

A node in a community can be defined as falling in to one of four categories (Table 3). A node will satisfy only one of the above four definitions. These definitions allow three additional definitions (Table 4). For each of the seven definitions (Tables 3 and 4), 'X', there are three functions: `IsXNode`, `XNodes` and `FractionXNodes`. The first returns a vector of type `logical` of length `NumberOfNodes`; values are `TRUE` for nodes that fit the definition of 'X'. The second returns the names of nodes for which `IsXNode` returns `TRUE`. The third returns the proportion of nodes in the community that fit the definition of 'X'. For example, a community's isolated species can be accessed by using `IsolatedNodes`.

Category	Description
Isolated	No resources or consumers
Basal	No resources and one or more consumers
Top-level	One or more resources and no consumers
Intermediate	Nodes not fitting any of the above categories

Table 3: Node connectivity. Cannibalistic links are disregarded.

Category	Description
Connected	Basal, Intermediate or Top-level
Non-basal	Isolated, Intermediate or Top-level
Non-top-level	Isolated, Basal or Intermediate

Table 4: Additional node connectivity

```
> IsolatedNodes(TL84)
```

```
[1] "Asterionella formosa"      "Chrysosphaerella longispina"
[3] "Diceras sp."              "Rhizosolenia sp."
[5] "Spinocosmarium sp."       "Staurostrum sp."
```

We can use the `IsXNode` functions together with `NPS` to see a table of connectivity for the whole community.

```
> connectivity <- NPS(TL84, c(Basal='IsBasalNode',
                             Isolated='IsIsolatedNode',
                             Intermediate='IsIntermediateNode',
                             TopLevel='IsTopLevelNode'))
> connectivity
```

	Basal	Isolated	Intermediate	TopLevel
Nostoc sp.	TRUE	FALSE	FALSE	FALSE
Arthrodesmus sp.	TRUE	FALSE	FALSE	FALSE
Asterionella formosa	FALSE	TRUE	FALSE	FALSE
Cryptomonas sp. 1	TRUE	FALSE	FALSE	FALSE
Cryptomonas sp. 2	TRUE	FALSE	FALSE	FALSE
Chroococcus dispersus	TRUE	FALSE	FALSE	FALSE
Closteriopsis longissimus	TRUE	FALSE	FALSE	FALSE
Chrysosphaerella longispina	FALSE	TRUE	FALSE	FALSE
Dinobryon bavaricum	TRUE	FALSE	FALSE	FALSE
Dinobryon cylindricum	TRUE	FALSE	FALSE	FALSE
Dactylococcopsis fascicularis	TRUE	FALSE	FALSE	FALSE
Diceras sp.	FALSE	TRUE	FALSE	FALSE
Dictyosphaerium pulchellum	TRUE	FALSE	FALSE	FALSE
Dinobryon sertularia	TRUE	FALSE	FALSE	FALSE
Dinobryon sociale	TRUE	FALSE	FALSE	FALSE
Glenodinium quadridens	TRUE	FALSE	FALSE	FALSE

Microcystis aeruginosa	TRUE	FALSE	FALSE	FALSE
Mallomonas sp. 1	TRUE	FALSE	FALSE	FALSE
Mallomonas sp. 2	TRUE	FALSE	FALSE	FALSE
Unclassified flagellates	TRUE	FALSE	FALSE	FALSE
Peridinium limbatum	TRUE	FALSE	FALSE	FALSE
Peridinium cinctum	TRUE	FALSE	FALSE	FALSE
Peridinium pulsillum	TRUE	FALSE	FALSE	FALSE
Peridinium wisconsinense	TRUE	FALSE	FALSE	FALSE
Chromulina sp.	TRUE	FALSE	FALSE	FALSE
Rhizosolenia sp.	FALSE	TRUE	FALSE	FALSE
Selenastrum minutum	TRUE	FALSE	FALSE	FALSE
Spinocosmarium sp.	FALSE	TRUE	FALSE	FALSE
Staurostrum sp.	FALSE	TRUE	FALSE	FALSE
Synedra sp.	TRUE	FALSE	FALSE	FALSE
Trachelomonas sp.	TRUE	FALSE	FALSE	FALSE
Ascomorpha eucadis	FALSE	FALSE	TRUE	FALSE
Synchaeta sp.	FALSE	FALSE	TRUE	FALSE
Bosmina longirostris	FALSE	FALSE	TRUE	FALSE
Conochilus (solitary)	FALSE	FALSE	TRUE	FALSE
Cyclops varians rubellus	FALSE	FALSE	TRUE	FALSE
Diaphanosoma leuchtenbergianum	FALSE	FALSE	TRUE	FALSE
Daphnia pulex	FALSE	FALSE	TRUE	FALSE
Filinia longispina	FALSE	FALSE	TRUE	FALSE
Conochiloides dossuarius	FALSE	FALSE	TRUE	FALSE
Gastropus stylifer	FALSE	FALSE	TRUE	FALSE
Holopedium gibberum	FALSE	FALSE	TRUE	FALSE
Kellicottia sp.	FALSE	FALSE	TRUE	FALSE
Keratella cochlearis	FALSE	FALSE	TRUE	FALSE
Keratella testudo	FALSE	FALSE	TRUE	FALSE
Leptodiaptomus siciloides	FALSE	FALSE	TRUE	FALSE
Orthocyclops modestus	FALSE	FALSE	TRUE	FALSE
Ploesoma sp.	FALSE	FALSE	TRUE	FALSE
Polyarthra vulgaris	FALSE	FALSE	TRUE	FALSE
Trichocerca multicroinis	FALSE	FALSE	TRUE	FALSE
Trichocerca cylindrica	FALSE	FALSE	TRUE	FALSE
Tropocyclops prasinus	FALSE	FALSE	TRUE	FALSE
Chaoborus punctipennis	FALSE	FALSE	TRUE	FALSE
Phoxinus eos	FALSE	FALSE	TRUE	FALSE
Phoxinus neogaeus	FALSE	FALSE	TRUE	FALSE
Umbra limi	FALSE	FALSE	FALSE	TRUE

Because nodes can fit only one of the definitions in Table 3, each row in the `connectivity` data.frame should have one, and only one, value of TRUE. We can verify this by summing each row using R's `apply` function.

```
> all(1==apply(connectivity, 1, sum))
```

```
[1] TRUE
```

The following summations are also 1.

```
> sum(FractionBasalNodes(TL84),
      FractionIntermediateNodes(TL84),
      FractionTopLevelNodes(TL84),
      FractionIsolatedNodes(TL84))
```

```
[1] 1
```

```
> sum(FractionConnectedNodes(TL84),
      FractionIsolatedNodes(TL84))
```

```
[1] 1
```

```
> sum(FractionBasalNodes(TL84),
      FractionNonBasalNodes(TL84))
```

```
[1] 1
```

```
> sum(FractionTopLevelNodes(TL84),
      FractionNonTopLevelNodes(TL84))
```

```
[1] 1
```

3.3.5 Trophic chains

The `TrophicChains` functions returns a `data.frame` of every unique food chain in a community. Each chain starts with a basal node (`BasalNode`) and ends with a top-level node (`TopLevelNode`) does not contain the same node more than once.

```
> tc <- TrophicChains(TL84)
> dim(tc)
```

```
[1] 5988    8
```

There are 5988 unique chains in the food web and the longest chains contain 8 nodes. Let's look at the first 20 chains.

```
> head(tc, 20)
```

	Node.1	Node.2	Node.3	Node.4
1	Nostoc sp. Diaphanosoma leuchtenbergianum		Umbra limi	
2	Nostoc sp.	Daphnia pulex	Umbra limi	
3	Nostoc sp.	Holopedium gibberum	Umbra limi	
4	Nostoc sp.	Leptodiaptomus siciloides	Umbra limi	
5	Nostoc sp. Diaphanosoma leuchtenbergianum	Chaoborus punctipennis		Umbra limi
6	Nostoc sp. Diaphanosoma leuchtenbergianum	Phoxinus eos		Umbra limi
7	Nostoc sp. Diaphanosoma leuchtenbergianum	Phoxinus neogaeus		Umbra limi
8	Nostoc sp.	Daphnia pulex	Chaoborus punctipennis	Umbra limi
9	Nostoc sp.	Daphnia pulex	Phoxinus eos	Umbra limi
10	Nostoc sp.	Daphnia pulex	Phoxinus neogaeus	Umbra limi
11	Nostoc sp.	Holopedium gibberum	Phoxinus eos	Umbra limi
12	Nostoc sp.	Holopedium gibberum	Phoxinus neogaeus	Umbra limi

13 Nostoc sp.	Leptodiaptomus siciloides	Cyclops varians rubellus	Umbra limi
14 Nostoc sp.	Leptodiaptomus siciloides	Orthocyclops modestus	Umbra limi
15 Nostoc sp.	Leptodiaptomus siciloides	Tropocyclops prasinus	Umbra limi
16 Nostoc sp.	Leptodiaptomus siciloides	Chaoborus punctipennis	Umbra limi
17 Nostoc sp.	Leptodiaptomus siciloides	Phoxinus eos	Umbra limi
18 Nostoc sp.	Leptodiaptomus siciloides	Phoxinus neogaeus	Umbra limi
19 Nostoc sp.	Diaphanosoma leuchtenbergianum	Chaoborus punctipennis	Phoxinus eos
20 Nostoc sp.	Diaphanosoma leuchtenbergianum	Chaoborus punctipennis	Phoxinus neogaeus

Node.5 Node.6 Node.7 Node.8

1
2
3
4
5
6
7
8
9
10
11
12
13
14
15
16
17
18
19 Umbra limi
20 Umbra limi

Just as with TLPS, `TrophicChains` accepts a 'node.properties' parameter that you can use to add node properties to the returned. For example, to get a table containing the \log_{10} -transformed body mass of each node in every chain.

```
> tc.with.log10M <- TrophicChains(TL84, node.properties='Log10M')
```

3.3.6 Trophic level

Several different measures of trophic level are used (e.g. Williams and Martinez, 2004; Jonsson et al., 2005; Zook et al., 2011.) The `PreyAveragedTrophicLevel` function uses the matrix-inversion method of Levine (1980) to compute trophic levels (Williams and Martinez, 2004). This method is very fast and accounts for flow through loops. A different measure of trophic level is offered by the `ChainAveragedTrophicLevel` function, which enumerates every unique food chain in the web (using `TrophicChains`) and computes the mean position of each node in every chain (Williams and Martinez, 2004). The method of `ChainAveragedTrophicLevel` is the same as that described as 'trophic height' by Jonsson et al. (2005) and the name `TrophicHeight` is a synonym for `ChainAveragedTrophicLevel`. `ChainAveragedTrophicLevel` might be noticeably slower than `PreyAveragedTrophicLevel` for very large and/or highly connected food webs.

```
> tail(NPS(TL84, c('PreyAveragedTrophicLevel', 'ChainAveragedTrophicLevel')), 10)
```

	PreyAveragedTrophicLevel	ChainAveragedTrophicLevel
Orthocyclops modestus	3.205357	4.200000
Ploesoma sp.	2.000000	2.000000
Polyarthra vulgaris	2.000000	2.000000
Trichocerca multicroinis	2.000000	2.000000
Trichocerca cylindrica	2.000000	2.000000
Tropocyclops prasinus	3.142857	3.333333
Chaoborus punctipennis	3.171344	4.602527
Phoxinus eos	3.529951	5.168337
Phoxinus neogaeus	3.529951	5.168337
Umbra limi	3.802678	5.835003

Cheddar offers the six different measures of trophic level described by Williams and Martinez (2004). A function is provided for each one. The `TrophicLevels` convenience function returns a matrix containing all six.

```
> tail(TrophicLevels(TL84), 10)
```

	ShortestTL	ShortWeightedTL	LongestTL	LongWeightedTL
Orthocyclops modestus	3	3.102679	5	4.102679
Ploesoma sp.	2	2.000000	2	2.000000
Polyarthra vulgaris	2	2.000000	2	2.000000
Trichocerca multicroinis	2	2.000000	2	2.000000
Trichocerca cylindrica	2	2.000000	2	2.000000
Tropocyclops prasinus	3	3.071429	4	3.571429
Chaoborus punctipennis	2	2.585672	6	4.585672
Phoxinus eos	3	3.264975	7	5.264975
Phoxinus neogaeus	3	3.264975	7	5.264975
Umbra limi	3	3.401339	8	5.901339

	ChainAveragedTL	PreyAveragedTL
Orthocyclops modestus	4.200000	3.205357
Ploesoma sp.	2.000000	2.000000
Polyarthra vulgaris	2.000000	2.000000
Trichocerca multicroinis	2.000000	2.000000
Trichocerca cylindrica	2.000000	2.000000
Tropocyclops prasinus	3.333333	3.142857
Chaoborus punctipennis	4.602527	3.171344
Phoxinus eos	5.168337	3.529951
Phoxinus neogaeus	5.168337	3.529951
Umbra limi	5.835003	3.802678

See the help page for `TrophicLevels` for more information on these different measures.

4 Community manipulations

4.1 Node order

The ordering of nodes within a community can be important both for presentation and analysis. Cheddar's `OrderCommunity` function reorders nodes and returns a new community object. `OrderCommunity` accepts names that meets the criteria of the `properties` parameter of the `NPS` function. This includes the names of 'first-class' properties, such as *M*, and the names of functions that take a single community and return a value for each node, such as `Degree`, which returns the number of trophic links for each node. The following examples order TL84 by increasing body mass and by increasing degree.

```
> TL84.increasing.M <- OrderCommunity(TL84, 'M', title='Increasing M')
> head(NPS(TL84.increasing.M, c('M', 'Degree')))
```

	M	Degree
Chromulina sp.	3.03e-14	18
Dactylococcopsis fascicularis	1.32e-13	4
Diceras sp.	1.53e-13	0
Trachelomonas sp.	1.75e-13	18
Cryptomonas sp. 1	2.03e-13	18
Closteriopsis longissimus	2.37e-13	3

```
> TL84.increasing.degree <- OrderCommunity(TL84, 'Degree',
                                             title='Increasing degree')
> head(NPS(TL84.increasing.degree, c('M', 'Degree')))
```

	M	Degree
Asterionella formosa	1.12e-12	0
Chrysosphaerella longispina	8.31e-10	0
Diceras sp.	1.53e-13	0
Rhizosolenia sp.	6.86e-13	0
Spinocosmarium sp.	3.71e-12	0
Staurostrum sp.	4.30e-12	0

Similar to R's `order` function, `OrderCommunity` can sort by more than one name with subsequent names used to break ties. We can use this to sort alphabetically by category and then by increasing *M* within each category.

```
> TL84.category.then.M <- OrderCommunity(TL84, 'category', 'M')
> head(NPS(TL84.category.then.M, c('category', 'M')))
```

	category	M
Keratella cochlearis	invertebrate	1.00e-11
Keratella testudo	invertebrate	1.00e-11
Kellicottia sp.	invertebrate	2.00e-11
Conochilus (solitary)	invertebrate	3.50e-11
Ploesoma sp.	invertebrate	1.05e-10
Gastropus stylifer	invertebrate	1.35e-10

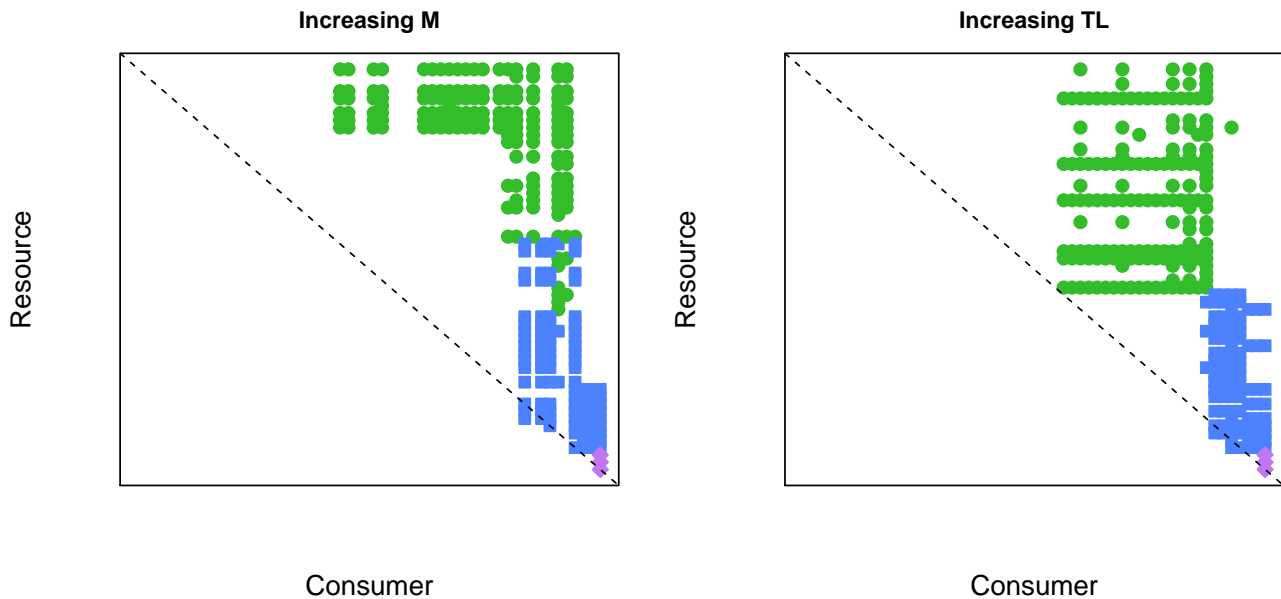
4.2 Node order and intervality

Visualising the food web as a predation matrix is central to many analyses and theories. There has been much recent interest in the relationship between food web structure and species' niches, in particular the role of body size on determining a species' position in a food web and the effect on intervality - a measure of the adjacency of resources and consumers in the food web (Williams and Martinez, 2000; Stouffer et al., 2006; Zook et al., 2011). We can use `OrderCommunity` to explore the effect ordering species along different niche axes. The code fragment below creates two new orderings of `TL84`, one by increasing body mass and the other by increasing trophic level, with random ordering within ties for trophic level (Zook et al., 2011).

```
> # Increasing M
> TL84.increasing.M <- OrderCommunity(TL84, 'M', title='Increasing M')
> new.order <- order(PreyAveragedTrophicLevel(TL84), sample(1:56))
> TL84.increasing.TL <- OrderCommunity(TL84, new.order=new.order,
                                         title='Increasing TL')
```

We could use any of Cheddar's different measure of trophic level (Section 3.3.6). The `PlotPredationMatrix` function allows us to graphically compare the effect of these different orderings.

```
> par(mfrow=c(1,2))
> PlotPredationMatrix(TL84.increasing.M)
> PlotPredationMatrix(TL84.increasing.TL)
```



The total number of gaps in diets (columns) and consumers (rows) (Stouffer et al., 2011; Zook et al., 2011):

```
> SumDietGaps(TL84.increasing.M)
[1] 132
> SumDietGaps(TL84.increasing.TL)
```

```
[1] 418
```

```
> SumConsumerGaps(TL84.increasing.M)
```

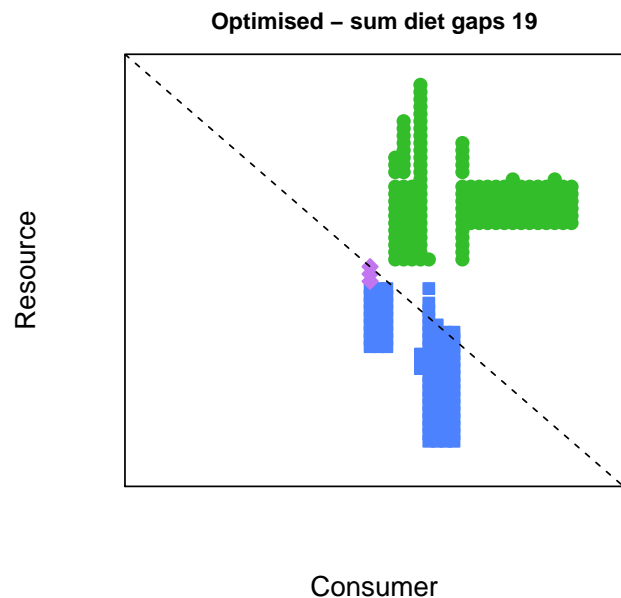
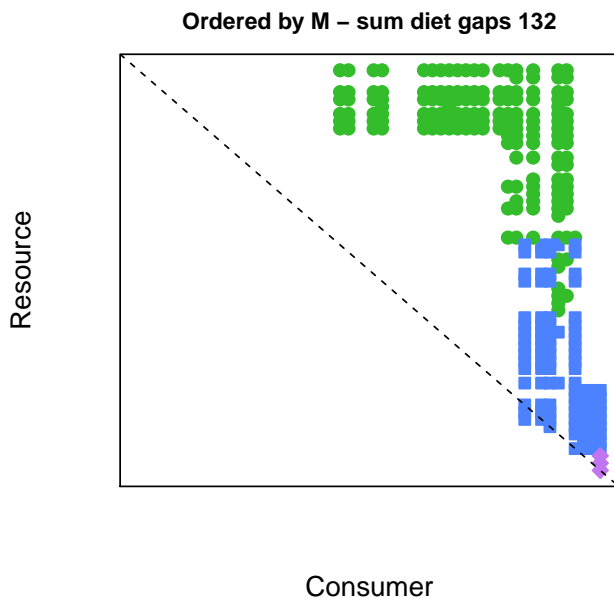
```
[1] 154
```

```
> SumConsumerGaps(TL84.increasing.TL)
```

```
[1] 95
```

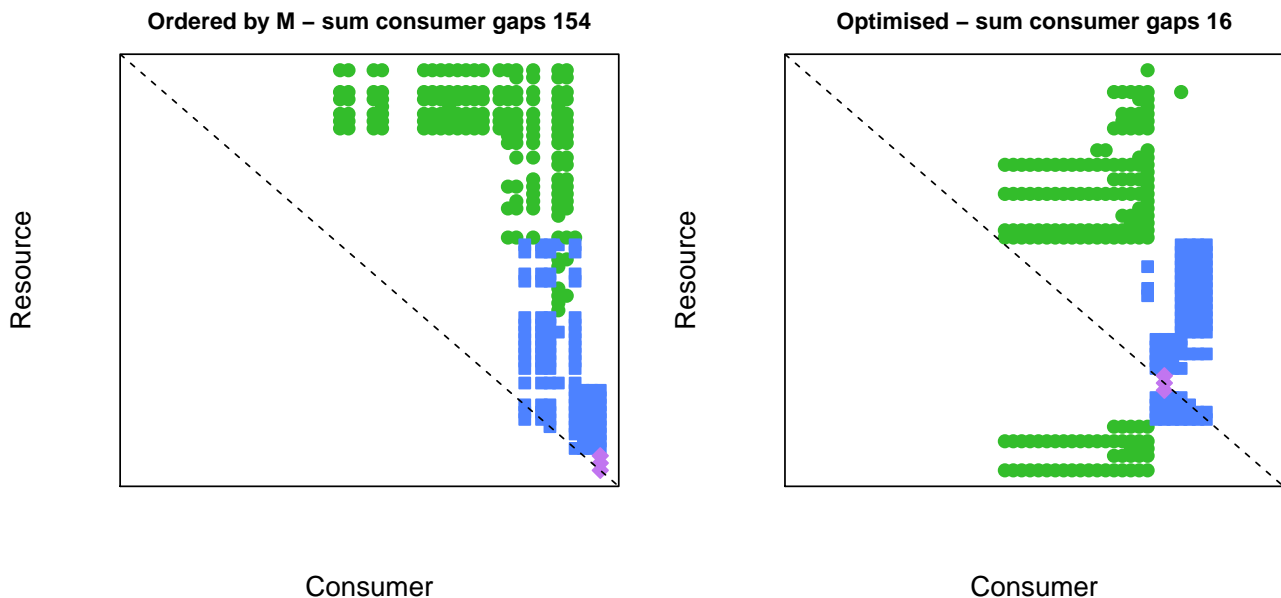
The `MinimiseSumDietGaps` function implements simulated annealing learning (a stochastic optimisation method) to minimise `SumDietGaps`, as described by Stouffer et al. (2006).

```
> par(mfrow=c(1,2))
> PlotPredationMatrix(TL84.increasing.M,
  main=paste('Ordered by M - sum diet gaps',
    SumDietGaps(TL84.increasing.M)))
> res <- MinimiseSumDietGaps(TL84)
> PlotPredationMatrix(res$reordered,
  main=paste('Optimised - sum diet gaps',
    SumDietGaps(res$reordered)))
```



MinimiseSumConsumerGaps uses the same method to minimise the gaps in each species' consumers (Zook et al., 2011).

```
> par(mfrow=c(1,2))
> PlotPredationMatrix(TL84.increasing.M,
                      main=paste('Ordered by M - sum consumer gaps',
                                SumConsumerGaps(TL84.increasing.M)))
> res <- MinimiseSumConsumerGaps(TL84)
> PlotPredationMatrix(res$reordered,
                      main=paste('Optimised - sum consumer gaps',
                                SumConsumerGaps(res$reordered)))
```



4.3 Removing nodes

Isolated nodes are often removed from food-web analyses (e.g. Jonsson et al., 2005). `RemoveIsolatedNodes` is a convenience function that returns a new `Community` with isolated nodes removed.

```
> NumberOfNodes(TL84)

[1] 56

> IsolatedNodes(TL84)

[1] "Asterionella formosa"      "Chrysosphaerella longispina"
[3] "Diceras sp."              "Rhizosolenia sp."
[5] "Spinocosmarium sp."       "Staurostrum sp."

> NumberOfTrophicLinks(TL84)

[1] 269
```

```

> TL84.no.isolated <- RemoveIsolatedNodes(TL84)
> NumberOfNodes(TL84.no.isolated)      # Six fewer species

[1] 50

> IsolatedNodes(TL84.no.isolated)      # No isolated species

character(0)

> NumberOfTrophicLinks(TL84.no.isolated) # Number of trophic links unchanged

[1] 269

```

The general-purpose `RemoveNodes` function returns a new `Community` object with one or more nodes removed.

```

> NumberOfNodes(TL84)

[1] 56

> NumberOfTrophicLinks(TL84)

[1] 269

> # Remove the first ten nodes
> TL84.r <- RemoveNodes(TL84, 1:10)
> NumberOfNodes(TL84.r)

[1] 46

> NumberOfTrophicLinks(TL84.r)

[1] 213

> # Remove producers
> TL84.r <- RemoveNodes(TL84, 'producer'==NP(TL84, 'category'))
> NumberOfNodes(TL84.r)

[1] 25

> NumberOfTrophicLinks(TL84.r)

[1] 103

> # Remove species by name
> TL84.r <- RemoveNodes(TL84, c("Phoxinus eos", "Phoxinus neogaeus", "Umbra limi"))
> NumberOfNodes(TL84.r)

[1] 53

> NumberOfTrophicLinks(TL84.r)

[1] 239

```

4.4 Removing cannibalistic links

`RemoveCannibalisticLinks` returns a new `Community` without those trophic links in which a node consumes itself.

```
> NumberOfNodes(TL84)

[1] 56

> Cannibals(TL84)          # 5 species

[1] "Cyclops varians rubellus" "Orthocyclops modestus"  "Tropocyclops prasinus"
[4] "Chaoborus punctipennis"  "Umbra limi"

> NumberOfTrophicLinks(TL84)

[1] 269

> TL84.no.cannibals <- RemoveCannibalisticLinks(TL84)
> NumberOfNodes(TL84.no.cannibals)          # Number of nodes unchanged

[1] 56

> Cannibals(TL84.no.cannibals)              # No species

character(0)

> NumberOfTrophicLinks(TL84.no.cannibals)  # 5 fewer trophic links

[1] 264
```

4.5 Lumping nodes

Certain analyses call for food-web nodes to be merged. In order to reduce biases, nodes that share the same resources and consumers, so-called ‘trophic species’, are commonly lumped together (Briand and Cohen, 1984; Pimm et al., 1991; Williams and Martinez, 2000). The `LumpTrophicSpecies` performs this task and returns a new `Community` object.

```
> NumberOfNodes(TL84)

[1] 56

> TL84.lumped <- LumpTrophicSpecies(TL84)
> length(unique(TrophicSpecies(TL84)))    # 22 trophic species in TL84...

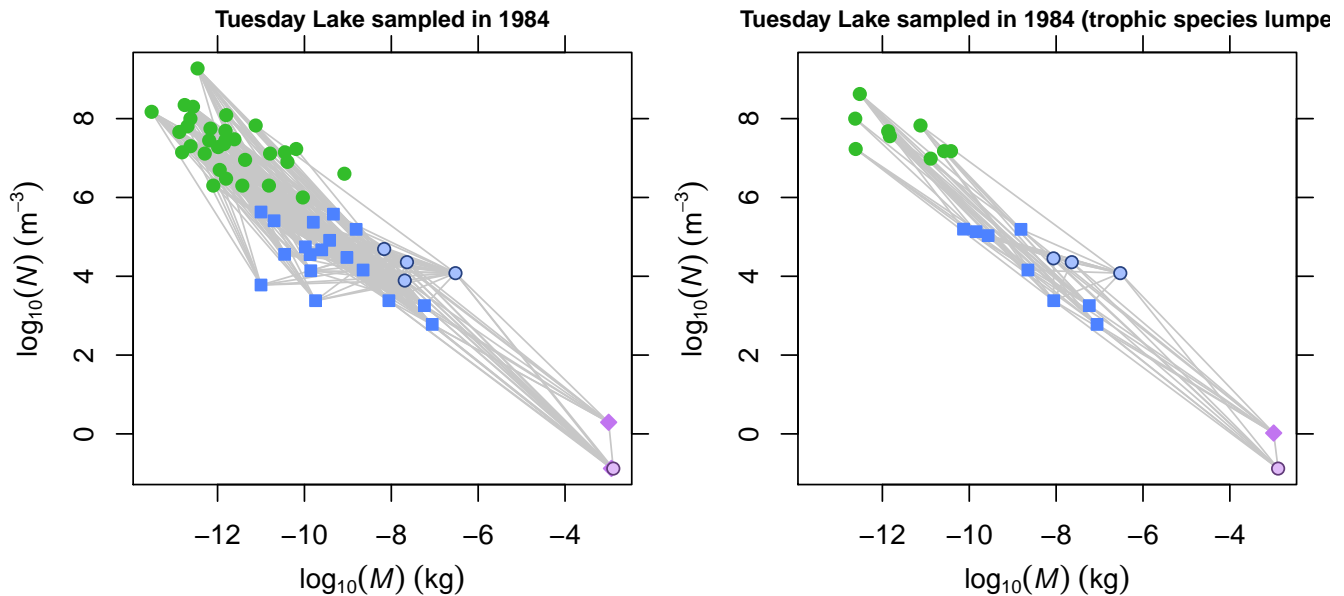
[1] 22

> NumberOfNodes(TL84.lumped)              # ... and 22 nodes in the lumped web

[1] 22
```


The plot below shows the lumped and unlumped webs.

```
> par(mfrow=c(1,2))
> plot(TL84)
> plot(TL84.lumped, xlim=range(Log10M(TL84)), ylim=range(Log10N(TL84)))
```



The `LumpNodes` function is a more general-purpose function that allows any nodes in a community to be lumped together. It takes a parameter 'lump', which should be a vector of length `NumberOfNodes`. Nodes with the same value of 'lump' will be merged together. This example lumps together isolated species in TL84.

```
> length(which(IsIsolatedNode(TL84))) # 6 isolated species

[1] 6

> IsolatedNodes(TL84) # Names of isolated nodes

[1] "Asterionella formosa" "Chrysosphaerella longispina"
[3] "Diceras sp." "Rhizosolenia sp."
[5] "Spinocosmarium sp." "Staurostrum sp."

> lump <- NP(TL84, 'node') # Existing node names
> # Give isolated nodes the same lump value
> lump[IsolatedNodes(TL84)] <- 'Isolated nodes lumped together'
> TL84.lumped <- LumpNodes(TL84, lump)
> NumberOfNodes(TL84) # 56 nodes in unlumped web

[1] 56

> NumberOfNodes(TL84.lumped) # 51 nodes in lumped web
```

```
[1] 51
```

```
> IsolatedNodes(TL84.lumped) # A single node
```

```
[1] "Isolated nodes lumped together"
```

By default, numeric values are weighted by numerical abundance, N .

This trivial example shows that no nodes are lumped if values in lump are unique to each node.

```
> lump <- NP(TL84, 'node')
```

```
> identical(TL84, LumpNodes(TL84, lump, title=CP(TL84, 'title')))
```

```
[1] FALSE
```

The Ythan Estuary dataset contains two species that are split by life stage: *Platichthys flesus* (european flounder) and *Somateria mollissima* (common eider). The code fragment below shows how to lump these in to a single node for each species.

```
> data(YthanEstuary)
```

```
> # The names of nodes in YthanEstuary
```

```
> lump <- NP(YthanEstuary, 'node')
```

```
> # European flounder:
```

```
> # "Platichthys flesus" and "Platichthys flesus (juvenile)"
```

```
> # Lump these in to one node
```

```
> lump["Platichthys flesus (juvenile)"==lump] <- "Platichthys flesus"
```

```
> # Common eider:
```

```
> # "Somateria mollissima" and "Somateria mollissima (juvenile)"
```

```
> # Lump these in to one node
```

```
> lump["Somateria mollissima (juvenile)"==lump] <- "Somateria mollissima"
```

```
> YthanEstuary.lumped <- LumpNodes(YthanEstuary, lump)
```

```
> NumberOfNodes(YthanEstuary) # 92
```

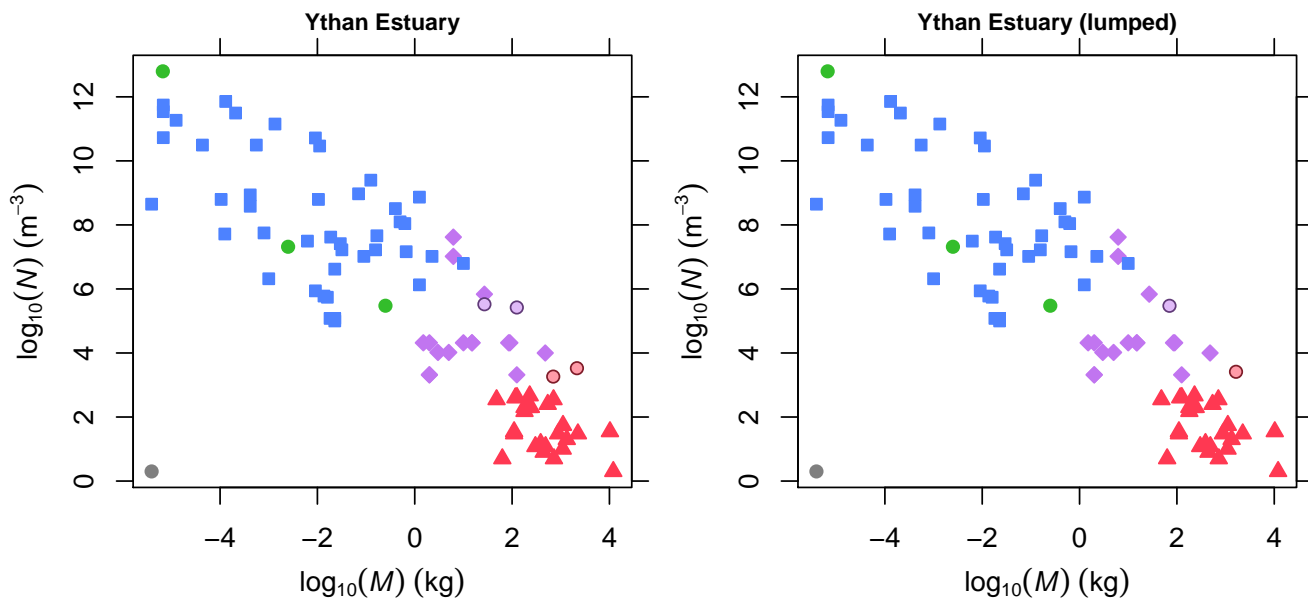
```
[1] 92
```

```
> NumberOfNodes(YthanEstuary.lumped) # 90
```

```
[1] 90
```

Graphically compare the two communities.

```
> # Plot the original and lumped communities
> par(mfrow=c(1,2))
> plot(YthanEstuary, highlight.nodes=c("Platichthys flesus",
                                       "Platichthys flesus (juvenile)",
                                       "Somateria mollissima",
                                       "Somateria mollissima (juvenile)"),
       show.web=FALSE)
> plot(YthanEstuary.lumped, highlight.nodes=c("Platichthys flesus",
                                              "Somateria mollissima"),
       show.web=FALSE)
```



The default behaviour of `LumpNodes` and `LumpTrophicSpecies` is to aggregate numeric node properties by computing the N -weighted mean.

```
> NPS(YthanEstuary.lumped)["Platichthys flesus", c('M','N')]
```

```

               M           N
Platichthys flesus 70.36585 298480
```

```
> # These values were computed as follows
> nps <- NPS(YthanEstuary)
> M <- nps[c("Platichthys flesus", "Platichthys flesus (juvenile)", 'M']
> N <- nps[c("Platichthys flesus", "Platichthys flesus (juvenile)", 'N']
> # Arithmetic mean of N
> mean(N)
```

```
[1] 298480
```

```
> # N-weighted mean of M
> weighted.mean(M, N)
```

```
[1] 70.36585
```

The ‘weight.by’ parameter controls this behaviour:

```
> YthanEstuary.lumped2 <- LumpNodes(YthanEstuary, lump, weight.by=NULL)
> NPS(YthanEstuary.lumped2)["Platichthys flesus", c('M','N')]
```

```

           M      N
Platichthys flesus 76 298480
```

```
> # Computed as the arithmetic means of M and N
> mean(M)
```

```
[1] 76
```

```
> mean(N)
```

```
[1] 298480
```

```
>
```

References

- F Briand and JE Cohen. Community food webs have scale-invariant structure. 307(5948):264–267, 1984. doi: 10.1038/307264a0.
- S.R. Carpenter and J.F. Kitchell. *The trophic cascade in lakes*. Cambridge University Press, 1996.
- J.E. Cohen, T. Jonsson, and S.R. Carpenter. Ecological community description using the food web, species abundance, and body size. *Proceedings of the National Academy of Sciences of the United States of America*, 100(4):1781–1786, 2003. doi: 10.1073/pnas.232715699.
- C. Digel, J.O. Riede, and U. Brose. Body sizes, cumulative and allometric degree distributions across natural food webs. 120(4):22335–22340, 2011. doi: 10.1073/pnas.0910582106.
- M.C. Emmerson and D. Raffaelli. Predator-prey body size, interaction strength and the stability of a real food web. *Journal of Animal Ecology*, 73(3):399–409, 2004. doi: 10.1111/j.0021-8790.2004.00818.x.
- SJ Hall and D. Raffaelli. Food-web patterns: lessons from a species-rich web. *Journal of Animal Ecology*, 60(3):823–841, 1991.
- U. Jacob, A. Thierry, U. Brose, W.E. Arntz, S. Berg, T. Brey, I. Fetzer, T. Jonsson, K. Mintenbeck, C. Möllmann, et al. The role of body size in complex food webs: A cold case. 45:181–223, 2011. doi: 10.1016/B978-0-12-386475-8.00005-8.
- Tomas Jonsson, Joel E Cohen, and Stephen R Carpenter. Food webs, body size, and species abundance in ecological community description. *Advances In Ecological Research*, 36:1–84, 2005. doi: 10.1016/S0065-2504(05)36001-6.

- S. Levine. Several measures of trophic structure applicable to complex food webs. *Journal of Theoretical Biology*, 83(2):195–207, 1980. doi: 10.1016/0022-5193(80)90288-X.
- S.B. Otto, B.C. Rall, and U. Brose. Allometric degree distributions facilitate food-web stability. 450 (7173):1226–1229, 2007. doi: 10.1038/nature06359.
- S.L. Pimm, J.H. Lawton, and J.E. Cohen. Food web patterns and their consequences. 350(6320):669–674, 1991. doi: 10.1038/350669a0.
- Daniel B Stouffer, Enrico L Rezende, and Lui’s A. Nunes Amaral. The role of body mass in diet contiguity and food-web structure. 80(3):632–639, 2011. doi: 10.1111/j.1365-2656.2011.01812.x.
- D.B. Stouffer, J. Camacho, and L.A.N. Amaral. A robust measure of food web intervality. 103(50): 19015–19020, 2006. doi: 10.1073/pnas.0603844103.
- P.H. Warren. Spatial and temporal variation in the structure of a freshwater food web. *Oikos*, 55(3): 299–311, 1989.
- Richard J Williams and Neo D Martinez. Simple rules yield complex food webs. 404(6774):180–183, 2000. doi: 10.1038/35004572.
- R.J. Williams and N.D. Martinez. Limits to trophic levels and omnivory in complex food webs: theory and data. *The American Naturalist*, 163(3):458–468, 2004. doi: 10.1086/381964.
- G. Woodward, D.C. Speirs, and A.G. Hildrew. Quantification and resolution of a complex, size-structured food web. *Advances In Ecological Research*, 36:85–135, 2005. doi: 10.1016/S0065-2504(05)36002-8.
- P. Yodzis. Local trophodynamics and the interaction of marine mammals and fisheries in the benguela ecosystem. *Journal of Animal Ecology*, 67(4):635–658, 1998. doi: 10.1046/j.1365-2656.1998.00224.x.
- Alexander E. Zook, Anna Eklof, Ute Jacob, and Stefano Allesina. Food webs: Ordering species according to body size yields high degree of intervality. 271(1):106–113, 2011. doi: 10.1016/j.jtbi.2010.11.045.